
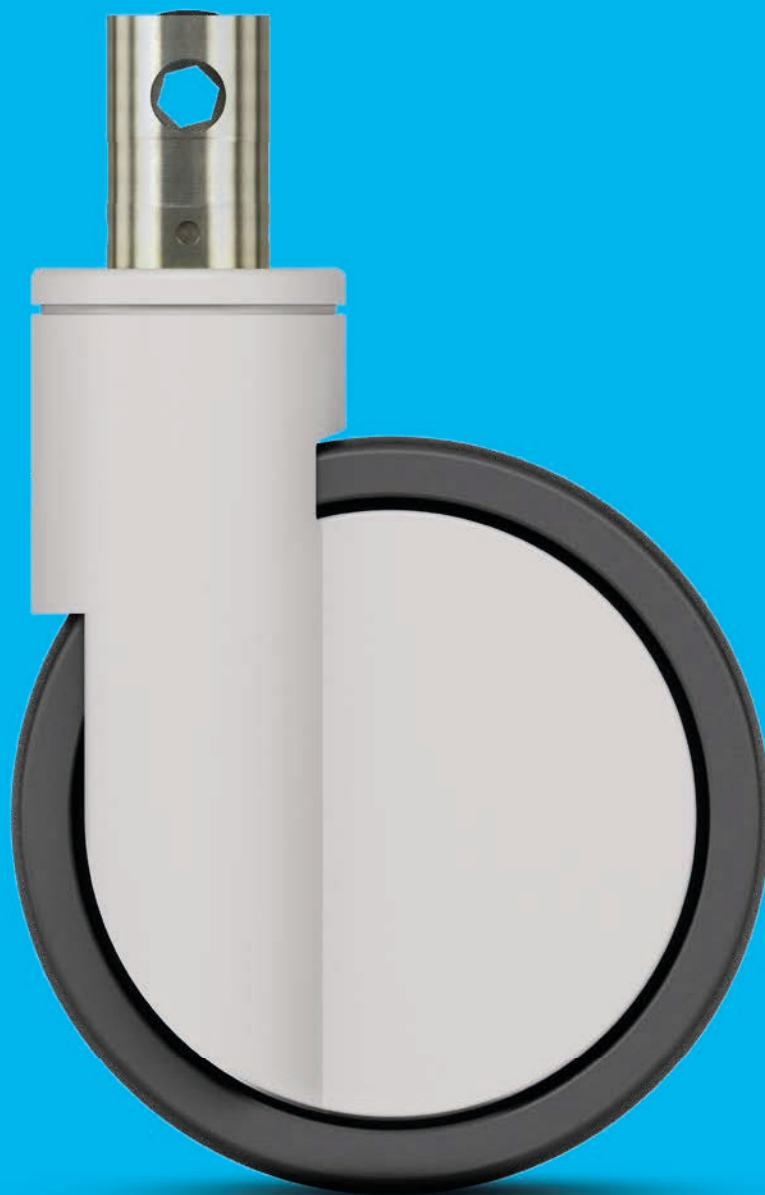


# PRODUCT INFORMATION

## INTEGRAL

 100 - 150 kg    130 - 229 mm    100 - 200 mm

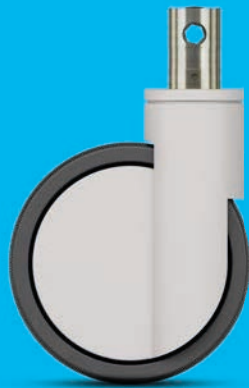


**TENTE**

BETTER MOBILITY. BETTER LIFE.

# INTEGRAL

Full choice of customisable product solutions.



**HOUSINGS**  
Pages: 6-11



**WHEELS**  
Pages: 12-15



**FITTINGS**  
Pages: 16-19

# INTEGRAL SMART

Selected standard products.



**SMART VERSION**  
Pages: 20-23

# MOBILITY FROM THE WORLD MARKET LEADER

TENTE believes in smart mobility solutions which noticeably improve people's lives and their working environment. As the world market leader in hospital bed castors, we have developed many customer-focussed solutions which increase productivity, ensure safety and open up new horizons in matters of design, durability as well as environmental friendliness. Leading manufacturers and companies of different industries rely on these competencies and our high production quality.

On the following pages you will find technical information about our Integral product family. We will also explain the added value this mobility solution offers to your organisation. Features include:

## **Quiet and smooth actuation**

Very low actuation forces ensure smooth and quiet operation.

## **Highly customisable**

Adjust angles, brake and actuation forces to your needs.

## **Fast assembly**

Our quick-fitting solution makes for fast assembly.



product  
design  
award



reddot  
design  
award

# INTEGRAL



# FEATURES



## Reduced cleaning

The castors have smooth, easy-to-clean surfaces.



## Award-winning design

Awarded with prestigious prizes by international juries.



## Certified safety

TÜV Süd certified performance standard.



## Permanent washability

All-metal options with components made of stainless steel.



## Chemical-resistant components

Resistant to many cleaning agents and chemical substances.



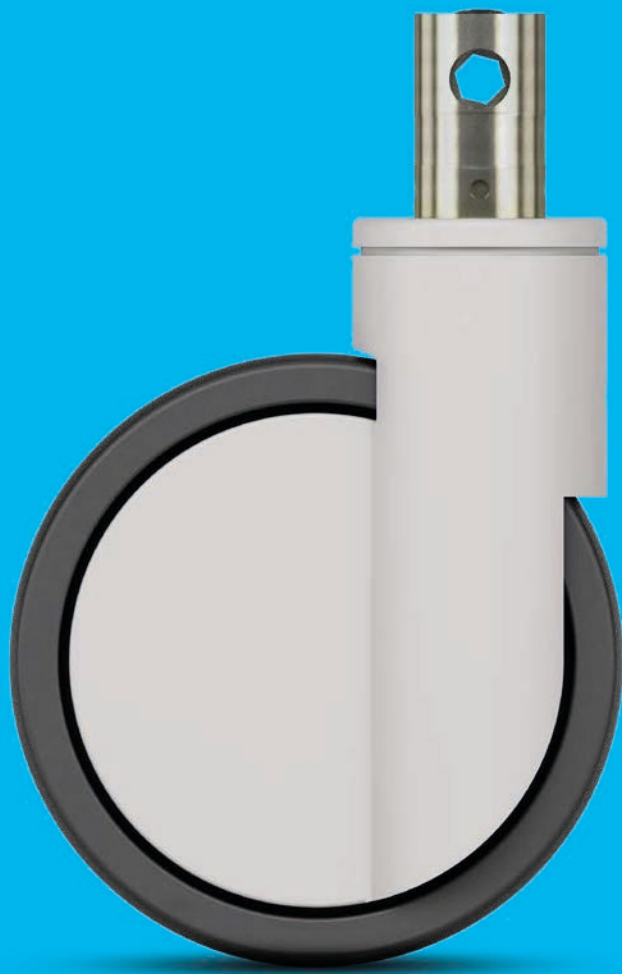
## Colour matching

Colours can be adapted to match the product design. Standard colours:

 RAL 9002  RAL 9006

 RAL 9011

# HOUSINGS



# FEATURES



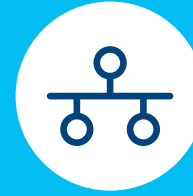
## Optimised steering mechanism

Directional lock for improved steering around curves, as well as moving in a straight line for over long distances.



## User-friendly central lock

Simultaneous locking of more than one castor using a central actuation lever.



## Practical system solution

Practical system solution with all technical components for central locking.



## Easy steering

Precision ball bearing in swivel head.



## Multistage switching function

Up to three locking positions: directional lock, total lock or free mobility.



## Secured stand

Total lock for simultaneously locking the wheel and swivel housing.



## Extremely strong construction

Main load carried by an inner fork which is made of pressed stainless steel or pressed steel.

# HOUSINGS

The frame is made of pressed steel or pressed stainless steel, with a precision ball bearing in the swivel head and wheel. The housing cover is made of synthetic materials and the stem has a cam hole for profile bars for central locking. The castors have smooth, easy-to-clean surfaces.

## Swivel castor

Wheel and housing are free to move for easy manoeuvrability.



## Central total and directional lock

User-friendly central lock for simultaneous locking of more than one castor. Combined directional lock for improved steering around curves, as well as movement in a straight line over long distances. Total lock for simultaneously locking the wheel and swivel bearing to allow for secure standing.





The materials are tested in our own laboratory for compliance with European standards. Non-hazardous materials are used in order to comply with the RoHS directive and REACH regulation of the European Union. These do not contain polycyclic aromatic hydrocarbons or chromium (VI). All components are resistant to many cleaning agents and chemical substances.

● **Central total lock**

Simultaneous locking of the wheel and swivel bearing for secure standing with more than one castor.



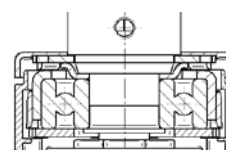
## Standard castors



Description	 <b>Housing type</b>	Swivel castor	Swivel castor with central total or directional lock	Swivel castor with central total lock
	<b>Article description</b>	2040	2044	2046
	<b>Frame material</b>	Pressed steel	Pressed steel	Pressed steel
	<b>Housing cover material</b>	Synthetic	Synthetic	Synthetic
	<b>Swivel bearing</b>	Precision ball bearing	Precision ball bearing	Precision ball bearing
	<b>Washable</b>	-	-	-
Swivel interference	 <b>Wheel <math>\varnothing</math> 100 mm</b>	-	-	-
	<b>Wheel <math>\varnothing</math> 125 mm</b>	195 mm	195 mm	195 mm
	<b>Wheel <math>\varnothing</math> 150 mm</b>	230 mm	230 mm	230 mm
	<b>Wheel <math>\varnothing</math> 200 mm</b>	320 mm	320 mm	320 mm

Items with this sign „-“ are not available in our standard range. Please contact us.

### Swivel bearing



Precision ball bearing for best manoeuvrability.

## Washable castors

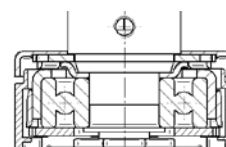


	<b>Housing type</b>	Swivel castor	Swivel castor with central total or directional lock	Swivel castor with central total lock
	<b>Article description</b>	7040	7044	7046
	<b>Frame material</b>	Pressed stainless steel	Pressed stainless steel	Pressed stainless steel
	<b>Housing cover material</b>	Synthetic	Synthetic	Synthetic
	<b>Swivel bearing</b>	Precision ball bearing	Precision ball bearing	Precision ball bearing
	<b>Washable*</b>	●	●	●
	<b>Wheel Ø 100 mm</b>	-	-	-
	<b>Wheel Ø 125 mm</b>	-	-	-
	<b>Wheel Ø 150 mm</b>	230 mm	230 mm	230 mm
	<b>Wheel Ø 200 mm</b>	-	-	-

Items with this sign „-“ are not available in our standard range. Please contact us.

\*Washable versions with metal components made of stainless steel. Washable castors must be sealed in the fitting area by the hospital bed manufacturer.

### Swivel bearing

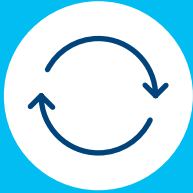


Precision ball bearing for best manoeuvrability.

# WHEELS

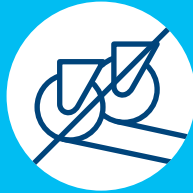


# FEATURES



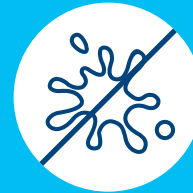
## Comfortable manoeuvrability

Outstanding swivel and rolling properties due to optimised tread geometry and material selection.



## Non-marking movement

Wheels with reduced abrasion and little cleaning requirement.



## Non-staining operation

Non-staining on contact with floors during long standing periods.



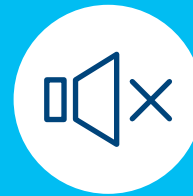
## Certified conductivity

Conductive versions to protect users and electrical devices from electrostatic discharge.



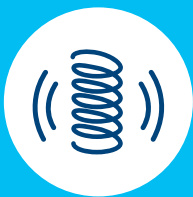
## Protective seal

Optional wheels with sealed bearings to protect against spray water and dirt.



## Quiet rolling

Soft wheel option for quieter mobility.



## Low-vibration transport

Optional wheels with extra soft tread centre and good shock absorbing properties.

# WHEELS

Precision ball bearings, polyurethane treads and wheels and excellent geometry all ensure minimal pushing force is required and that wheels are easy to manoeuvre. Durability, stability and washability are basic requirements.



## Maxtech

Extremely hard-wearing and hygienic. Perfect for functional design, injection-moulded polyurethane. Option: washable, with sealed precision ball bearing.



## Maxtech soft

Extremely hard-wearing and hygienic. Perfect for functional design, injection-moulded polyurethane. With extra soft tread centre for good shock absorbing properties.



## Maxtech conductive

Polyurethane with certified conductivity to protect users and electrical devices against electrostatic discharge. Conductive castors get a yellow cap as standard, making them easily identifiable.

## Technical data and availability



i		Product name	Maxtech	Maxtech	Maxtech conductive	Maxtech soft
		Article description	UAP	UAX	XSX	HAP
Description	Tread material	Polyurethane	Polyurethane	Polyurethane	Polyurethane sandwich	
	Tread hardness	Shore D 42	Shore D 42 or D 59***	Shore D 40	Shore D 42 and shore A 70	
	Wheel body material	Polyamide	Polyamide	Polyamide	Polyamide	
	Temperature range	-30°C / +80°C	-30°C / +80°C	-30°C / +80°C	-30°C / +80°C	
	Width of tread	32 mm	32 - 35 mm****	32 - 35 mm****	32 mm	
	Electric conductive (10 <sup>4</sup> OHM)	-	-	●	-	
	Washable*	-	●	●	-	
	Bearing type	Plain bearing	-	-	-	-
Roller bearing		-	-	-	-	
Cone ball bearing		-	-	-	-	
Precision ball bearing		●	● Sealed	● Sealed	●	
Load capacity**	Wheel Ø 100 mm	-	-	-	-	
	Wheel Ø 125 mm	150 kg	150 kg	150 kg	-	
	Wheel Ø 150 mm	150 kg	150 kg	150 kg	150 kg	
	Wheel Ø 200 mm	-	150 kg	150 kg	-	

Items with this sign „-“ are not available in our standard range. Please contact us.

\* Washable versions have a sealed wheel precision ball bearing. Washable castors must be sealed in the fitting area by the customer.

\*\* Load capacity according to DIN 12531.

\*\*\* Shore D 42 in diameter 100 - 150 mm and Shore D 59 in wheel diameter 200 mm.

\*\*\*\* Width of tread of castors with wheel diameter 125 - 150 mm have 32 mm and castors with diameter 200 mm 35 mm width.

### Swivel bearing



Precision ball bearing for highest performance.



### Load capacity

The load capacity depends on the housing and wheel. It has been tested and fulfils the requirements according to EN 12531 at a speed of 4 km/h. When using 4 castors, determine the necessary load capacity as follows: The weight of the application plus the additional load divided by 3 castors.

$$\frac{\text{Weight of application} + \text{load}}{3} = \text{Load capacity of one castor}$$

# FITTINGS





# FEATURES



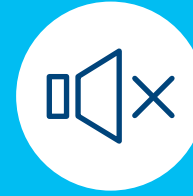
## Fast assembly

Faster assembly thanks to an easy, quick-fitting solution.



## Highly customisable

Adjust angles, brake and actuation forces to your needs.



## Quiet and smooth actuation

Easy activation makes for smooth - and quiet - use.



## Tested quality

Tested in our own laboratory in compliance with European standards.

# FITTINGS

For an easy mounting into tubes, we offer different solid stem fittings. You can choose between different sizes and locking functions. The stems are highly customisable. Very low actuation forces ensure smooth and quiet operation. We also offer a special fitting type for fast assembly.

## Stems with central locking function

Choose between central total lock or central total and directional lock. Very low actuation forces ensure smooth and quiet operation. The switching angles, brake and actuation forces are adaptable to your needs. Contact us.

**Cam hole**  
To connect the castors by profile bars.

QUIET & SMOOTH



## Quick fitting

Save assembly time and material costs with a stem with octagonal profile. Fitting screws are not necessary.

**Thread**  
For safe fixation with screws.



## Solid stem

Easy mounting in tubes. For a long-lasting use, the stem is bright zinc plated and blue passivated.

## Technical data and availability

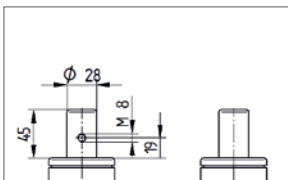


Description	 Fitting type	Solid stem	Stem with central total lock or central total and directional lock	Solid stem	Stem with central total lock or central total and directional lock	Stem with central total lock or central total and directional lock
	Article description	R05-28	R26-28	R05-32	R36-32	R36-34
	Shape	Round	Round	Round	Round	Round with octagonal profile
	Thread for fixation screw	M8	4 x M8	M6	4 x M6	-
	Thread position from bottom	19 mm	19 mm	7 mm	7 mm	-
	Solid stem $\varnothing$	28 mm	28 mm	32 mm	32 mm	32 mm
	Solid stem length	45 mm	96 mm	45 mm	50 mm	51 mm
	Shifting angles for actuation forces	-	30° or 45°	-	30° or 45°	30° or 45°
	Spring type for brake force	-	Soft, standard or hard	-	Soft, standard or hard	Soft, standard or hard
Overall height 	Wheel $\varnothing$ 100 mm	-	-	-	-	-
	Wheel $\varnothing$ 125 mm	158 mm	158 mm	158 mm	158 mm	-
	Wheel $\varnothing$ 150 mm	183 mm	183 mm	183 mm	183 mm	-
	Wheel $\varnothing$ 200 mm	229 mm	229 mm	229 mm	229 mm	229 mm

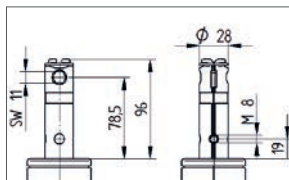
Items with this sign „-“ are not available in our standard range. Please contact us.

### Technical drawings

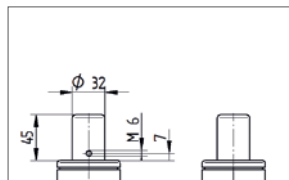
R05-28



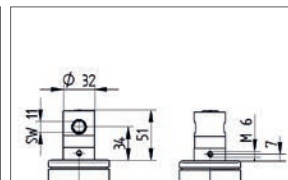
R26-28



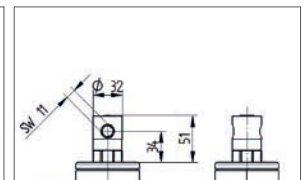
R05-32



R36-32



R36-34



# INTEGRAL SMART



# INTEGRAL SMART

For some standard versions the Integral is also available as a smart version in 100, 125 and 150 mm diameters with a reduced load capacity. An additional 100 mm diameter option offers an extremely low overall height of 130 mm.

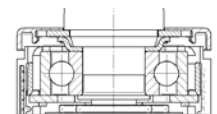


## Housing versions



Description	i			
	Housing type	Swivel castor	Swivel castor with central total or directional lock	Swivel castor with central-, total lock
	Article description	1040	1044	1046
	Frame material	Pressed steel	Pressed steel	Pressed steel
	Housing cover material	Synthetics	Synthetics	Synthetics
	Swivel bearing	Precision ball bearing	Precision ball bearing	Precision ball bearing
Washable*	● **	● **	● **	
Swivel interference	Wheel Ø 100 mm	180 mm	180 mm	180 mm
	Wheel Ø 125 mm	195 mm	195 mm	195 mm
	Wheel Ø 150 mm	230 mm	230 mm	230 mm
	Wheel Ø 200 mm	-	-	-

### Swivel bearing



Precision ball bearing for best manoeuvrability.

Items with this sign „-“ are not available in our standard range. Please contact us.

\*Washable versions with sealed wheel precision ball bearing. Washable castors must be sealed in the fitting area by the hospital bed manufacturer.

\*\* Just castors in diameter 100 mm are washable.

## Wheel versions



i		Product name	Maxtech	Maxtech	Maxtech conductive	Maxtech conductive
		Article description	UAP	UAX	XSP	XSX
Description	Tread material	Polyurethane	Polyurethane	Polyurethane	Polyurethane	
	Tread hardness	Shore D 42	Shore D 42	Shore D 40	Shore D 40	
	Wheel body material	Polyamide	Polyamide	Polyamide	Polyamide	
	Temperature range	-30°C / +80°C	-30°C / +80°C	-30°C / +80°C	-30°C / +80°C	
	Width of tread	32 mm	32 mm	32 mm	32 mm	
	Electric conductive (10 <sup>4</sup> OHM)	-	-	●	●	
	Washable*	-	●	-	●	
	Bearing type	Plain bearing	-	-	-	-
		Roller bearing	-	-	-	-
		Cone ball bearing	-	-	-	-
Precision ball bearing		●	● Sealed	●	● Sealed	
Load capacity **	Wheel Ø 100 mm	100 kg	100 kg	100 kg	100 kg	
	Wheel Ø 125 mm	135 kg	-	135 kg	-	
	Wheel Ø 150 mm	135 kg	-	135 kg	-	
	Wheel Ø 200 mm	-	-	-	-	

Items with this sign „-“ are not available in our standard range. Please contact us.

\*Washable versions with sealed wheel precision ball bearing. Washable castors must be sealed in the fitting area by the hospital bed manufacturer.

\*\* Load capacity according to DIN 12531.

### Swivel bearings



Precision ball bearing for highest performance.



### Load capacity

The load capacity depends on the housing and wheel. It has been tested and fulfils the requirements according to EN 12531 at a speed of 4 km/h. When using 4 castors, determine the necessary load capacity as follows: The weight of the application plus the additional load divided by 3 castors.

$$\frac{\text{Weight of application} + \text{load}}{3} = \text{Load capacity of one castor}$$

## Fitting versions

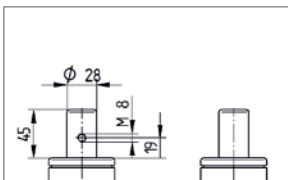


Description	 Fitting type	Solid stem	Solid stem with central total lock or central total and directional lock	Solid stem	Solid stem with central total lock or central total and directional lock	Solid stem with central total lock or central total and directional lock
	Article description	R05-28	R26-28	R05-32	R36-32	R36-34
	Shape	Round	Round	Round	Round	Round with octagonal profile
	Thread for fixation screw	M8	4 x M8	M6	4 x M6	-
	Thread position from bottom	19 mm	19 mm	7 mm	7 mm	-
	Solid stem $\varnothing$	28 mm	28 mm	32 mm	32 mm	32 mm
	Solid stem length	45 mm	96 mm	45 mm	50 mm	51 mm
	Shifting angles for actuation forces	-	30° or 45°	-	30° or 45°	30° or 45°
	Spring type for brake force	-	Soft, standard or hard	-	Soft, standard or hard	Soft, standard or hard
Overall height 	Wheel $\varnothing$ 100 mm	130 mm 139 mm	130 mm 139 mm	130 mm 139 mm	130 mm 139 mm	130 mm 139 mm
	Wheel $\varnothing$ 125 mm	158 mm	158 mm	158 mm	158 mm	-
	Wheel $\varnothing$ 150 mm	183 mm	183 mm	183 mm	183 mm	-
	Wheel $\varnothing$ 200 mm	229 mm	229 mm	229 mm	229 mm	229 mm

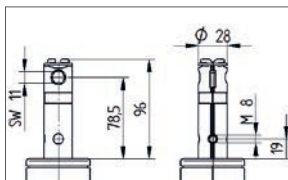
Items with this sign „-“ are not available in our standard range. Please contact us.

## Technical drawings

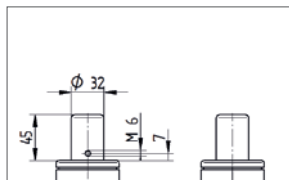
R05-28



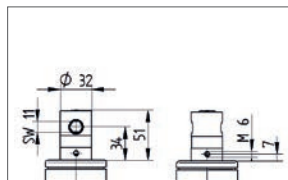
R26-28



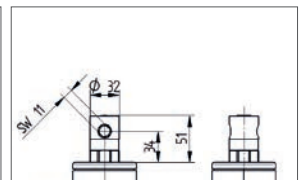
R05-32



R36-32



R36-34



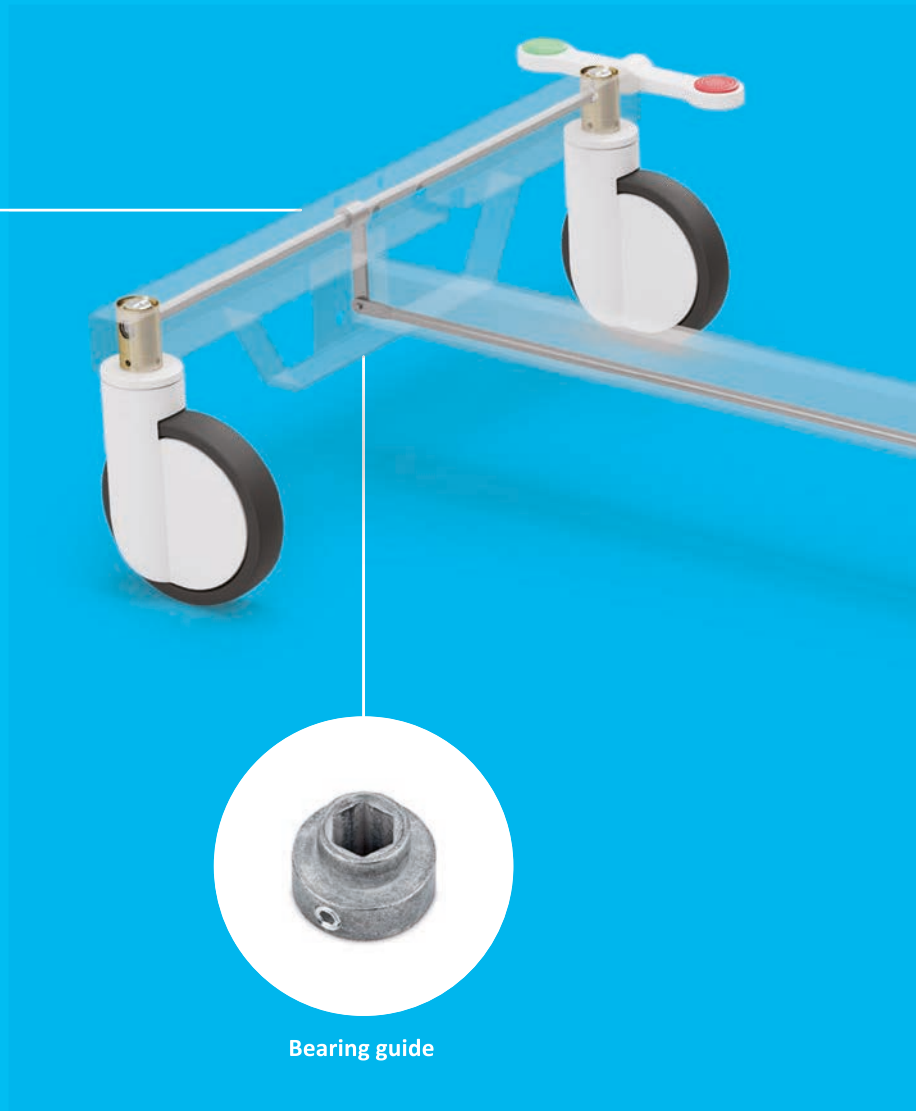
# ACCESSORIES FOR CENTRAL LOCKING

Our central locking components offer a practical solution for your needs. Please contact us for further advice.



## Change lever

To connect the transmission bar from the foot end to the head end. It is available in three different sizes.



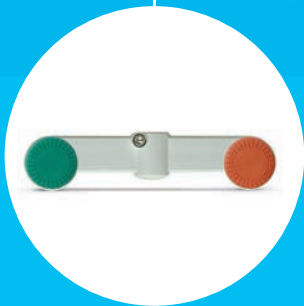
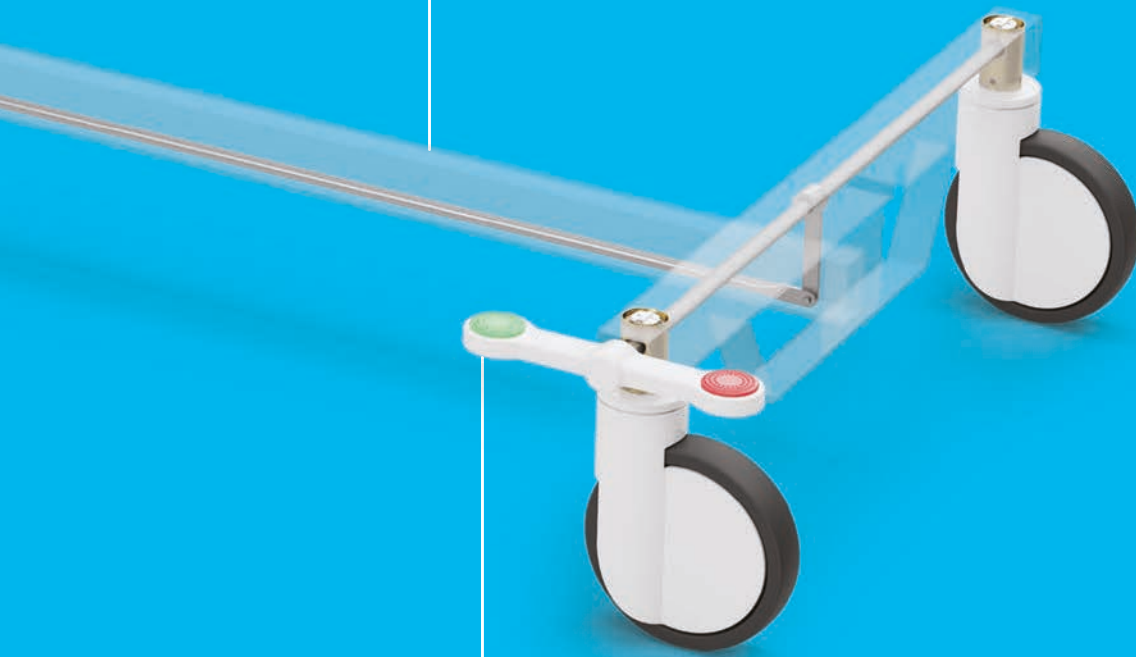
## Bearing guide





**Profile bar**

Available in different lengths,  
on request.



**TENTE lever**

All change levers will be delivered  
with a stainless steel screw. They are  
available as a single or double lever  
for the right and left side. Plugs are  
available in different colours.



**Optional: adaptor for customer levers**

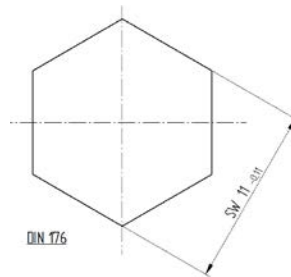
This round adaptor accepts customer  
made levers.

# TECHNICAL DATA ACCESSORIES

## Profile bar



i	Article description	Profile bar
	Wrench size	11
	Material	Zinc-plated steel
	Length	On request



## TENTE levers



Description	i Change lever type	Double lever	Lever	Lever
	Article description	Double lever	Lever	Lever 180
	Compatible with product	30° or 45°	30° or 45°	30° or 45°
	Material	Fibre-glass-reinforced polyamide	Fibre-glass-reinforced polyamide	Fibre-glass-reinforced polyamide
	Version	Left version Right version	Left version	Right version
	Width	41,5 mm	41,5 mm	41,5 mm
	Length	191,5 mm	95,75 mm	95,75 mm

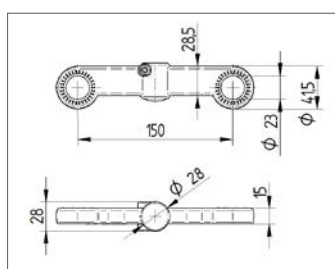
**Standard lever colours**  
More colours on request.

- RAL 7035
- Eloxal silver

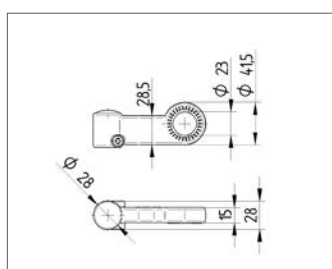
**Standard plug colours**  
More colours on request.

- RAL 6016
- RAL 3016
- RAL9011

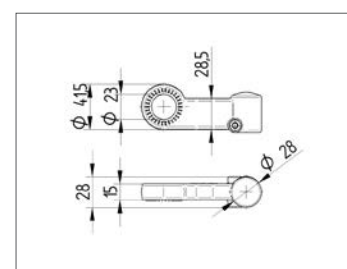
Double lever



Lever



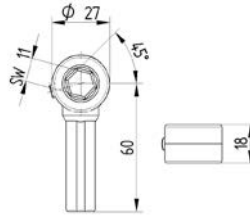
Lever 180



## Adaptor for customer levers



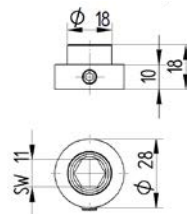
i	Article description	Adaptor
	Wrench size	11
	Material	Zinc-died casting



## Bearing guide



i	Article description	Bearing guide
	Wrench size	11
	Material	Zinc-died casting

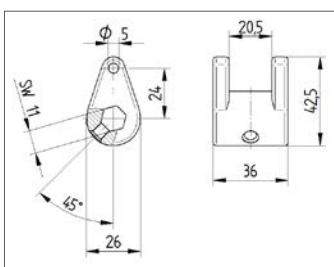


## Change lever

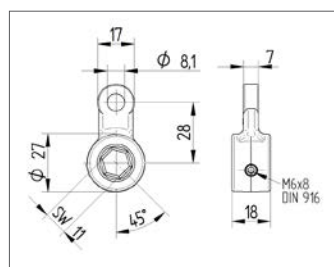


i	Article description	Change lever	Change lever	Change lever
	Wrench size	11	11	11
	Material	Zinc-died casting	Zinc-died casting	Zinc-died casting
	Length	24 mm	28 mm	65 mm

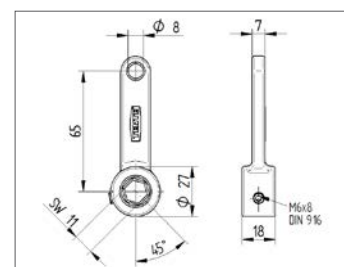
Change lever 24 mm length



Change lever 28 mm length



Change lever 65 mm length



# DIVERSITY WITH A SYSTEM

## OUR CASTORS

All of our products have their own specific qualities and strengths. Whether it's high design standards, specialist applications or exceptional load capacities – our range can meet your needs and be adapted to fit different models.

From the correct dimensions and technical specifications to the required configuration, our product families are able to offer the ideal solution - whatever you need. Contact us for more information or visit our website: [www.tente.com](http://www.tente.com)

E-Drive



⌀ 125 mm

Alpha



⊃ 70 - 500 kg  
⌀ 58 - 250 mm

Delta



⊃ 300 - 600 kg  
⌀ 125 - 200 mm

Delta twin



⊃ 600 - 750 kg  
⌀ 125 - 200 mm

Zeta



⊃ 300 - 800 kg  
⌀ 125 - 250 mm

Kappa



⊃ 300 - 2.000 kg  
⌀ 80 - 300 mm

Kappa flex



⊃ 360 - 750 kg  
⌀ 160 - 200 mm

Omikron



⊃ 900 - 12.000 kg  
⌀ 100 - 500 mm

Radiata



⊃ 1.200 - 1.500 kg  
⌀ 80 mm

Scout



150 - 350 kg  
160 - 200 mm

Integral



80 - 150 kg  
100 - 200 mm

Integral twin



125 - 250 kg  
100 - 150 mm

Linea



40 - 150 kg  
50 - 150 mm

Aviana



100 kg  
75 mm

Agila



40 - 100 kg  
50 - 150 mm

Stora



55 - 160 kg  
75 - 160 mm

Mono



30 - 70 kg  
50 - 100 mm

Galea



60 - 100 kg  
100 - 125 mm

Levina



60 - 100 kg  
75 - 150 mm

Anika



40 - 50 kg  
55 - 75 mm

Lumina



20 - 100 kg  
35 - 100 mm

Stylea



40 - 100 kg  
35 - 100 mm

Smiles



40 kg  
50 mm

Compacta



10 - 40 kg  
14 - 50 mm

# EXPERTISE THAT INSPIRES

## CONTACT US

We are a global company that offers you support on five continents. That means you can access on the spot support with an equal opportunity service and in-depth knowledge. Additionally, our experienced solution experts can advise you on the best mobility solution for your needs. Find your local TENTE contact on our website:

[www.tente.com/locations](http://www.tente.com/locations)

## INCREASE YOUR EFFICIENCY

With our smart mobility solutions, we help you save time, effort, energy and operational costs. That means you can improve your working methods and conditions to become more efficient and increase productivity, profitability and safety. Request our solution catalogue or visit our website to see how our customers benefit from our customised solutions:

[www.tente.com/solutions](http://www.tente.com/solutions)

## SAVE DEVELOPMENT TIME

You can find technical drawings, 3D CAD files and product data sheets on our website: [www.tente.com/integral](http://www.tente.com/integral)

## GET MORE INFORMATION

You can download catalogues and brochures on our website – and find useful information and customer references too: [www.tente.com/download](http://www.tente.com/download)





ER LIFE.

ETP



[www.tente.com](http://www.tente.com)



PRODUCTIVITY



SAFETY



DESIGN



DURABILITY



ENVIRONMENT